

Program Review Forum

NAPA VALLEY COLLEGE
NOVEMBER 6, 2020



2019-2020 Program Review

Review:

- Data
- Curriculum
- Outcomes Assessment



Collaborate:

- Evaluation of State of the Program
- Creation of Three-Year Program Plan
- Consideration of Plan within Context of Program Resources

Changes Associated with Program Review Process:

- Focused Exercise: Program Data, Curriculum, and Outcomes Assessment Results
- Data/Evidence Heavy – Narrative Light
- Opportunity for Discussion and Collaboration
- Evaluation of the State of the Program (Viability – Stability – Growth)
- Deliverable: Three-Year Program Plan
- Limited Number of Deadlines
(Review by Program Faculty/Staff – Review by Dean – Review by VP)
- Series of Workshops Offered by Program Review Support Team

Robyn Wornall, Ph.D.

Senior Dean

Research, Planning and Institutional Effectiveness



Impact of the Changes

- Average Length of Reports:
2016-2017 (9 Programs): 74.6 Pages
2019-2020 (19 Programs): 19.8 Pages

"Very
productive"

- Best Aspects of Process – from Participants:

- "Realistic deadlines"
- "It was much more focused and I think, much more useful. It got me to thinking about things that I hadn't considered before and focus on areas that had been neglected in the past."
- "I like being fed information about my program a bit at a time so that I have time to work on it. Also, I like not having any intermediate deadlines where stuff is due to ensure progress."
- "I was able to use the information from the PR to help formulate a plan to improve our area. I was also able to use the PR to help others in Admin understand the unique aspects of our discipline and why certain approaches are necessary."
- "It is much shorter and to the point now than before. I like the idea of explaining what you are going to do with the information rather than justifying why the data is the way that it is."
- "Lots of feedback, suggestions, and open communication and discussion. Very productive and informative."

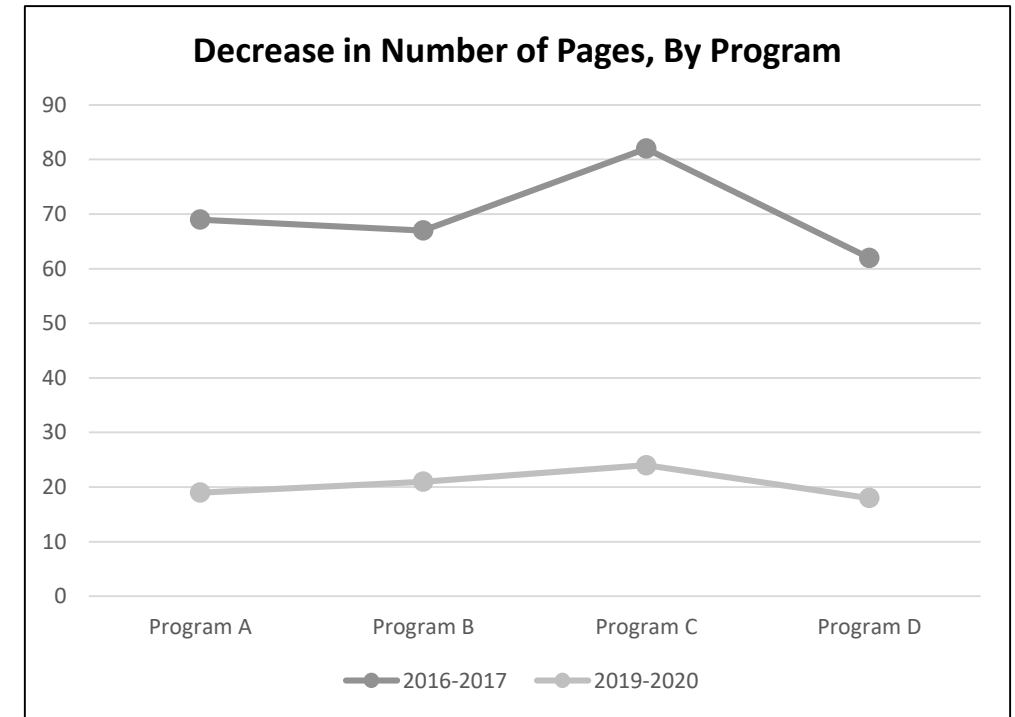
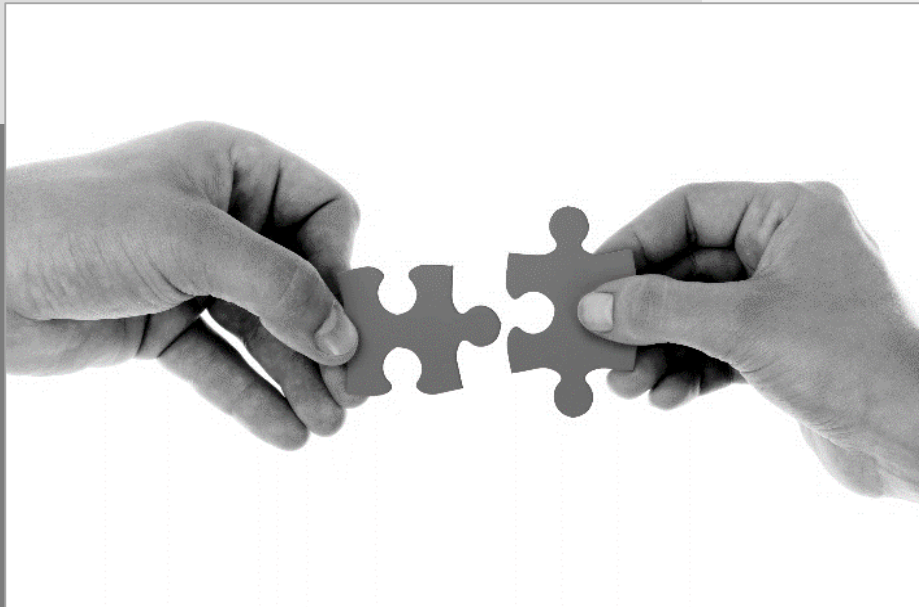


Table of Contents



1. Collaborative Approaches
 - Chemistry
 - Non-Credit & Community Education Career Technical Education
 - Physical Education
 - Sociology
2. Student Engagement Practices
 - Biology
 - Emergency Medical Services
 - Engineering
 - Music
 - Political Science
3. Program Philosophy/Culture
 - Arts (Studio Arts)
 - Digital Art and Design
 - Humanities
 - Student Health
 - Welcome Center
4. Program Adaptation
 - Associate Degree Nursing
 - Criminal Justice Training
 - Health Occupations
 - Photography
 - Vocational Nursing

Collaborative Approaches



- Chemistry
- Career Technical Education
- Physical Education
- Sociology



Chemistry Program Review

Collaborative Approaches

- Schedule classes to prevent conflicts with Biology, Physics, and Math.
- Share class schedules to ensure that students don't have too many exams on the same day.
- Collaborates with other programs to present a unified theme during Summer Bridge.
- Math Proficiency Quiz in collaboration with the Math Success Center and the Math Department.

Key Findings

- Retention and completion rates in Chemistry classes associated with math are lower than the institutional average.
- 98% Fill rate – high demand.
- The Chemistry program is growing (up 15.2% despite a decline in enrollment campus wide).
- The program cannot expand and grow without a new lab facility.

Three Year Program Plan

- Chemistry/STEM HS Summit.
- Hire new faculty to meet demands.

NONCREDIT AND COMMUNITY EDUCATION

- Effective Practices

- Strong curriculum development based on industry needs.
- Exemplary faculty that re responsive to industry and community needs.
- Exceptional class and program development for students.

- Key Findings

- Needed improvement in completion of curriculum process for certificates (CDCP) in BUSNC, HOSPNC, and FAMNC

- Plan Highlights (Growth)

- Complete program submittal for BUSINC, HOSPNC, and FAMNC
- Develop regular sequential offerings for all classes in these areas

KINESIOLOGY PROGRAM REVIEW

FALL 2019

DR. NADINE WADE-GRAVETT, PROGRAM COORDINATOR

EFFECTIVE PRACTICES

TALENTED FULL-TIME AND ADJUNCT FACULTY AS DEMONSTRATED BY FACULTY EVALUATIONS

MAINTAIN CURRENCY/ACTIVE IN THEIR FIELD
ACTIVELY ENGAGED IN EVALUATION, CURRICULUM
REVISION, & SLO ASSESSMENT PROCESSES

**STUDENT LEARNING OUTCOMES
ASSESSMENT DRIVEN REVISION OF
ALL COURSES**

ALMOST COMPLETED FULL ASSESSMENT CYCLE-
ONGOING ASSESSMENT

40+ course outlines revised to include more specific SLOs,
division moved away from the 6 general SLOs that applied to all
courses

**GROWTH/SUCCESS OF ONLINE
INSTRUCTION, TRAINING OF
FACULTY FOR ONLINE
INSTRUCTION**

ONLINE ENROLLMENT
TRANSITIONING TO MEET STUDENT NEEDS FOR
MORE ONLINE INSTRUCTION

KEY FINDINGS

HEADCOUNT & ENROLLMENT

DECLINE

PRODUCTIVITY & FILL RATE

AVERAGE CLASS SIZE HAS INCREASED BUT IS
STILL LESS THAN INSTITUTIONAL AVERAGE

**RETENTION & SUCCESSFUL
COURSE COMPLETION**

SIGNIFICANTLY HIGHER THAN INSTITUTIONAL
LEVEL, HIGH LEVEL OF VARIABILITY WITHIN
PROGRAM LEVEL

STUDENT TRACKING

Use Starfish and other technology to track student progress in courses and towards degree completion. Intervene early.

LOCAL CERTIFICATES

Develop personal training certificate so that students may begin working in the field immediately upon certificate completion.

KINESIOLOGY MENTORS

Develop mentorship program to encourage student connection and collaboration towards kinesiology degree completion.

MAINTAIN CURRENCY

Upgrades to facilities and continued maintenance attract students. Hiring of new full time staff with expertise. Continuous curriculum revision and addition to address trends.

SCHEDULING & PROMOTION

Monitor enrollment trends and identify best times to schedule courses, promote courses- aggressive media strategy and collaboration with Counseling.

Sociology – Program Review Fall 2019

- Collaboration
 - UMOJA (Race & Ethnicity)
 - English (Sociology of Crime)
 - History (Introduction to Sociology, Social Problems, Sociology of Crime)
- Surge in Sociology AA-Ts
 - Nearly a 100% increase in degrees awarded
 - In 2019, Sociology accounted for more than a quarter of all AA-Ts conferred.
- Looking forward
 - Recommended sequencing of courses for Sociology AA-T
 - Collaboration with across disciplines for Social Justice Studies degree

Student Engagement Practices



- Biology
- Emergency Medical Services
- Engineering
- Music
- Political Science



Biology Program Review

Student Engagement Practices

- Biology faculty actively engage students and maintain a high level of instructor-student interaction in labs and discussions.
- The department has effectively utilized Supplemental Instruction in several of our courses to the benefit of many students.
- Students that take advantage of the SI program tend to score one full grade higher than those that don't.

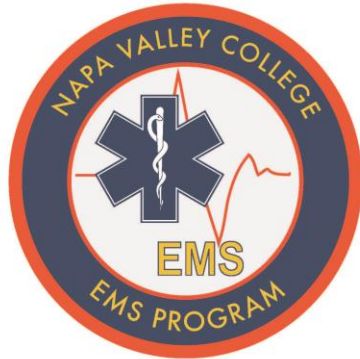
Key Findings

- Students enter the program under-prepared.
- Students do progressively better as they move through the program.
- Fills rates are among the highest at NVC (94% compared to 80% campus wide).

Three Year Program Plan

- Analyze new AS degrees in Natural Science-Life Science and in Pre-Health Science.
- Add resources for BIOL 105 to help improve student success.
- Become engaged in the development of Guided Pathways in Biology.

Student Engagement



EMS Program Goal:

"The Napa Valley College EMS Program is dedicated to creating a collaborative learning environment based on mutual respect and appreciation for the diversity of life and work experiences that each student brings to the learning environment. The program seeks to facilitate learning for each student in order that he/she can become a competent entry-level EMR/EMT/EMT-P who meets the State of California Title 22 requirements and the U.S. Department of Transportation National Standards."

Best Practices

Program Courses: EMT90, EMT95, EMT 310/311

Fail Forward – Students are allowed the chance and even encouraged to fail at something in the course to learn from it and pick themselves up and move forward. Rather they try and fail in a controlled course environment than to do so in an uncontrolled environment such as a patient's home at 2:37am.

Reading prior to quizzes – Students in the courses are not used to having a quiz over what they have read prior to a lecture. The EMS Program feels that this keeps the students engaged in their own learning and education. Requiring them to read prior to the course by offering a quiz on their knowledge and retention also brings for us the greater engagement in classroom discussion.

Canvas – The ability to move our courses to Canvas has changed the way that not only instructors can interact with students but also the way our students can interact with each other. Just the reduction in overall paper waste produced in the program has made an impact, We will continue to incorporate more aspects of Canvas into our course work.

Strength

We put out a quality product in the students that complete the EMS courses. Diverse Instructional Cadre with student success drive.

Improvement

We need to do a better job at marketing our EMS program.

Stability

The EMS Program should see some minor growth and will remain sustainable and continue to focus on Student Success and the Industry Partners needs.

Who We Are

The EMS Program is a dedicated group of individuals that bring years of Emergency Medical Service experience to the students. With history in Private Ambulance, Fire Based EMS, Law Enforcement, Search and Rescue, Tactical and Military Medicine the faculty is able to address students' questions about career direction. The ability to draw from a Instructional pool with a broad wealth of experience only increases the student learning experience and ultimately student interaction. The Faculty is truly the strength of the EMS Program.

Engineering Program Review

Engineering is a small *program*; however, it is an integral part of Napa Valley College. Engineering students take General Education, Math (Trigonometry to Calculus), and Science (Biology, Chemistry, and Physics) classes.

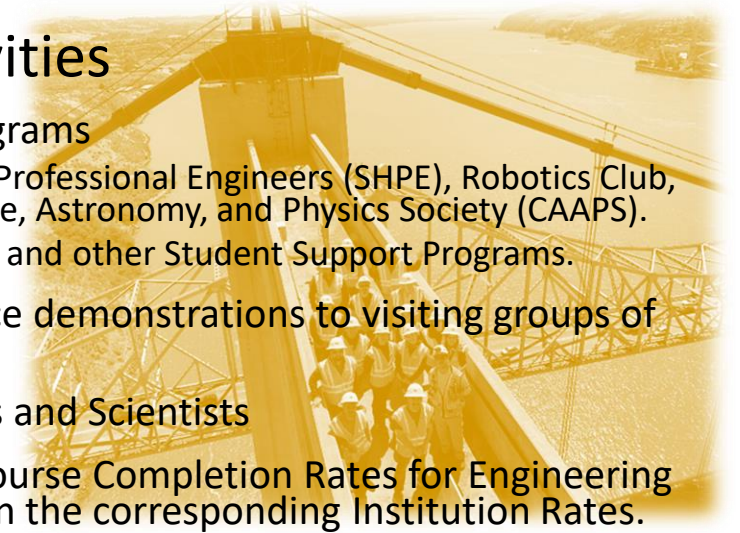
Outreach

- Start Early, Be Consistent, and Build Connections with Teachers
 - Engineering and Physics demonstrations.
- Motivate Students
 - Engineering is a rewarding career.
 - Engineering offers many opportunities.
- Outreach is Key to a Successful Engineering Program in years to come.
 - Stable enrollment over past 3 years.
 - Target students that don't know about our Engineering Program.



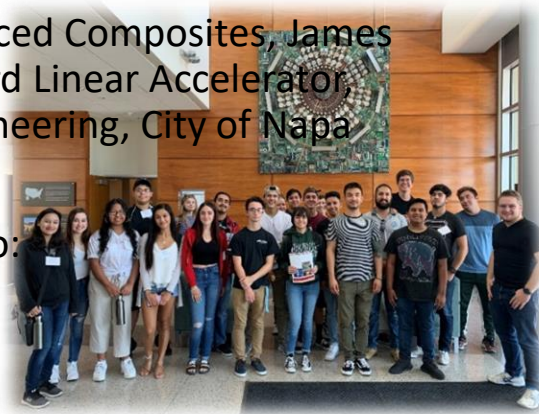
On-Campus Activities

- Student Clubs and Programs
 - Society of Hispanic Professional Engineers (SHPE), Robotics Club, Collegiate Aerospace, Astronomy, and Physics Society (CAAPS).
 - MESA/STEM Center and other Student Support Programs.
- Engineering and Science demonstrations to visiting groups of students.
- Breakfast for Engineers and Scientists
- Retention Rates and Course Completion Rates for Engineering Courses are higher than the corresponding Institution Rates.



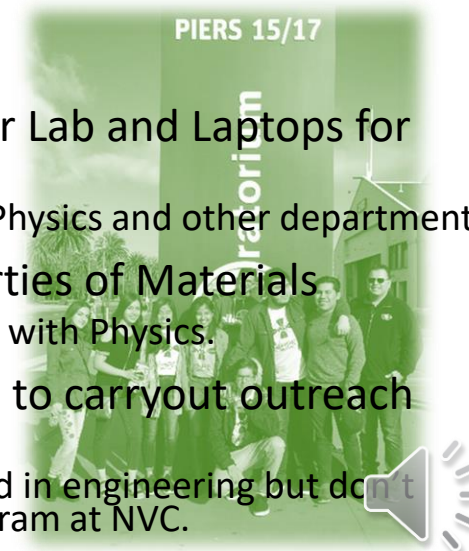
Field Trips

- Intelsat, Toray (formerly Tencate) Advanced Composites, James Loudspeakers, Carquinez Bridge, Stanford Linear Accelerator, San Francisco Exploratorium, Napa Engineering, City of Napa Jameison Water Treatment Plant.
- Field Trips give students opportunities to:
 - See engineering applications.
 - Build connections with professionals.
 - See themselves in the real world.



Needs

- Desktop Computers for Computer Lab and Laptops for Laboratories
 - These resources are shared with Physics and other departments.
- Laboratory equipment for Properties of Materials
 - This lab equipment can be shared with Physics.
- Need to find more effective ways to carryout outreach activities.
 - Target students that are interested in engineering but don't know about our engineering program at NVC.



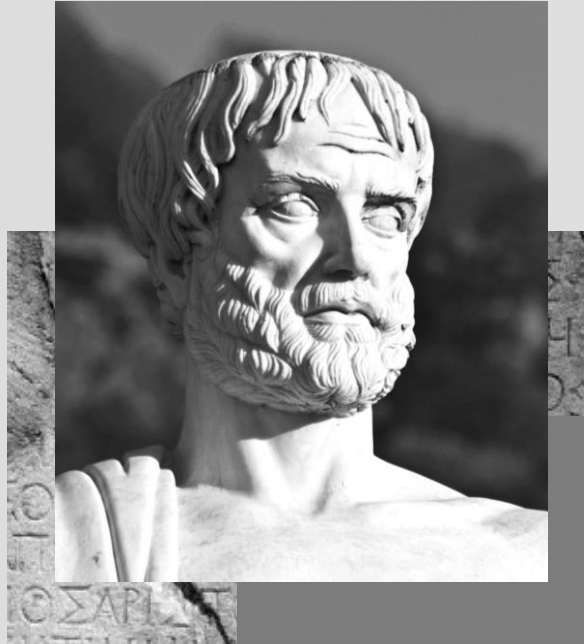
PROGRAM
REVIEW:
MUSIC



Political Science



Program Philosophy/Culture



- Studio Arts
- Digital Art and Design
- Humanities
- Student Health
- Welcome Center

Studio Arts (ARTS)

Effective Practices

- Program strong part of Visual Arts Department, which has robust culture of faculty dialogue, program integration, and consistent orientation toward fostering student success.
- High school outreach - “Art Reach”
- Curriculum alignment with transfer institutions.
- Full complement of classified staff to support students and program.
- Program-wide emphasis on development of creative problem-solving at all levels.
- Faculty participation in local art organizations, events, and trainings.
- Alignment and assessment of student learning outcomes between courses and program.

Key Findings

- Program is stable with planned growth post-pandemic.
- Enrollments down in three-year cycle, but consistent with reduction in number of sections with .8% decrease in average class size. Average section size 82% of capacity.
- Student Equity: above institution levels for retention and SCC but program dedicated to continued improvement
- Continued need for outreach to high schools for program alignment and student recruitment.
- Need for improved support for students in studio environments, including replacing ISA and budget for ongoing maintenance of equipment and facilities
- Need to improve communication of program pathways to students, including increased promotion of AA-T in Studio Arts and strengthening work with Counseling colleagues.
- Role of ARTS 100 as gateway NVC course.

Digital Art and Design (DART)

Effective Practices

- Program strong part of Visual Arts Department, which has robust culture of faculty dialogue, program integration, and consistent orientation toward fostering student success.
- High school outreach “Art Reach”
- Curriculum alignment / development
- Use of projects that embed learning in real-world design contexts
- Emphasis on creative problem solving relevant to education and career
- Alignment and assessment of student learning outcomes between courses and program.

Key Findings

- Program stable with some projected growth.
- Continued need for outreach to high schools for program alignment and student recruitment.
- Need for continued support for computer labs, including ISA, relationship with IT, and budget for necessary maintenance of tech and facilities
- Labor market data regionally strong for Graphic Design.
- Need for continued curriculum development and articulation with baccalaureate programs.
- Focus on improving online retention and completion, including PD for faculty in online instruction.

HUMANITIES DEPARTMENT PROGRAM REVIEW

STRENGTHS:

- Expertise of faculty: culturally responsive pedagogy; approachable, engaging, charismatic
- Course content includes the experiences of and/or contributions of communities such as African-Americans, Mexican/Latinx-Americans, Asian Pacific Islander-Americans, those of multiracial descent, the LGBT community, and the intersections thereof
- A variety of innovative teaching methods
- Relationship with NVUSD schools



SUCSESSES:

- AA Degree in Ethnic Studies (2018)
- Social Justice Studies-Ethnic Studies: AA-T Degree (2019)
- The Cultural Center (2016)
- 100% courses assessed
- PLOS in progress through upward assessment process
- Large enrollment increases in Huma 125,151, 160
- Class size increases in Huma 151 and 113
- HUMA productivity exceeds the target level for the institution
- Retention and successful course completion rates > corresponding institution rates for all courses
- Successful course completion rate for the program is significantly > rate at institutional level
- Successful course completion rate in HUMA-100 > program-level rate.
- Retention rates and successful course completion rates exceed the institution-wide rates for the following groups: African Americans, Hispanic, and first-generation students



2019 Program Review: Selected Results

Some positives:

53% of medical visits directly assist students to meet requirements for academic programs, sports participation, or jobs

Visit demographics reflect the diversity of the NVC student population

Surveys show high satisfaction with services

Room to grow:

Too many students unaware of the health center and its many services

Limited distance services

The Plan

Expand telehealth services and online offerings

Expand outreach efforts via clubs and classes, other means



WELCOME CENTER

Who? What? When? Where? & How?

Your first point of contact for information.

- Effective Practices

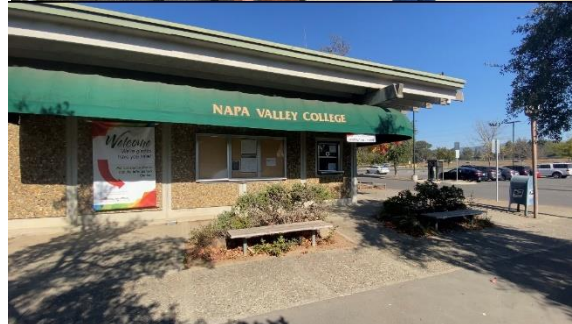
(Personalizing the Student Experience)

- Key Findings

(Connecting through peer-to-peer assistance)

- The Three Year Plan

(Development of a Student Leadership Program)



Your Guide to Navigating NVC Resources

Welcome Center

The Welcome Center is a "one-stop shop" providing easy access to further resources and other departments, such as Admissions & Records, Financial Aid, and the Transfer & Career Center.



Click on the links below!	Contact Us
NEED HELP?! ASK US!	Phone: 707-256-7215

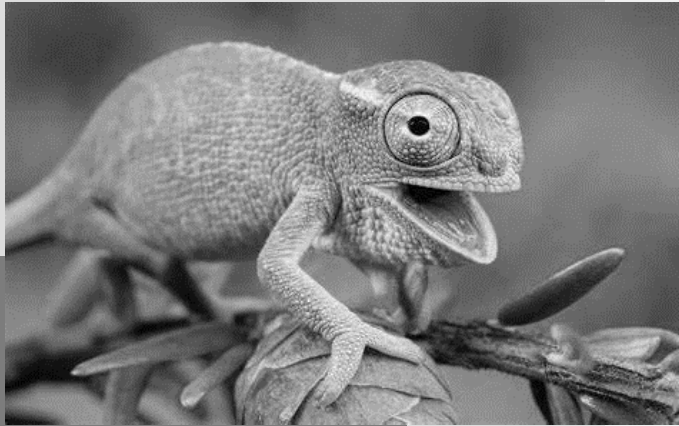
Contact us!

welcomecenter@napavalley.edu | (707) 256-7215 | Bldg. 1300, Rm. 1331A

www.napavalley.edu/welcomecenter

NEW: Information Center (Bldg. 900 – next to the bookstore)

Program Adaptation



- Associate Degree Nursing
- Criminal Justice Training
- Health Occupations
- Photography
- Vocational Nursing

Program Review: Associate Degree Nursing NVC Spring 2020



Effective Practices

- Major Curriculum changes approved by BRN, Curriculum Committee and Chancellors office
 - Pre-requisite classes to include CNA
 - Collaborated with Math Dept to create a math class appropriate for HEOC students who needed math support
- Old curriculum courses have been appropriately archived and updated catalog, curricula-net and webpage
- Survived pandemic meeting BRN requirements for concurrent class & clinical so students can graduate on time!
- Recruitment and hiring of three tenure track faculty with multiple specialties needed in the program
- NCLEX pass rates have increased from below 75% (BRN had program on “warning status” to having cohort pass rates greater than 90% for the past two years

Summary of Key Findings

- Need for consistent clinical sites, lab, simulation and virtual simulation to meet BRN requirements
- Need for teamwork and collaboration among faculty
 - Consistent presentation of faculty to students is essential
- Computer technology is imperative to students and faculty to be able to succeed

Development of the Three Year Plan

- Marketing of the Program
 - <https://vimeo.com/447283432>
- Maintain Improved cohort pass rates
 - Grant monies for Sim lab development and increased space
 - Continued facility improvement with WiFi access, update computers for faculty, classrooms, labs and access to a computer lab where nursing has testing and class access **when needed!**
- **Maintain historical relationships with local clinical facilities**
- Improve Retention in Nurs 151
 - Success counselor

CRIMINAL JUSTICE TRAINING CENTER

Adult Corrections Officer Core Course

- BSCC – STC Certified / Regulated – 2020 curriculum revision
- High Retention / Student Success - Affiliated / Self-sponsored
- Collaboration with Region and agencies beyond

Public Safety Dispatcher

- POST Certified / Regulated
- Affiliated and self-sponsored students
- New Technology-based instructor resource
- Ethics / Community Service / Conceptual and Technical based training

Health Occupations Course Cluster - Adaptation

- *Three of five courses are prerequisites for Vocational Nursing, Psychiatric Technician. One course is an option for Paramedic Certificate.*
- *One course is a supplementary course and is recommended by most HEOC disciplines as a recommendation.*
- *History of offering courses in-person but faculty adapted as the in-person student demand diminished.*
- *Course faculty have utilized student feedback to improve delivery over time.*
- *HEOC 372 – Intravenous Therapy is only course that cannot be offered fully online but instructional faculty have made adaptations to make it more accessible as hybrid.*

Photography

Effective Practices

- ❖ PHOT program regularly schedules a broad range of classes.
- ❖ Robust SLO and PLO assessment.
- ❖ Use of social media to communicate with students and promote photography program.
- ❖ Introduce student and the larger community a diverse range of photographers through the PhotoEye@NVC lecture series.
- ❖ Gallery shows promoting student work

Key Findings

- ❖ Solid assessment plan
- ❖ Fill rates within the Photography Program tend to be higher than the fill rates at the institutional level
- ❖ Difference between retention and successful course completion at the program level was higher than the difference at the institutional level
- ❖ Equity analysis shows the retention rate among Black/African American students is lower than the retention rate at the institutional level
- ❖ Equity analysis shows the successful course completion rate for Black/African American and Hispanic students is lower than the institutional level

Informing the Development of the Three-Year Plan

- ❖ Creating course content that better reflect students by implementing Cultural Responsive Pedagogy
- ❖ Striving to find as many diverse voices as guest speakers for the PhotoEye@NVC series.
- ❖ Better communication with counselors concerning the photo program
- ❖ Out reach to feeder schools via an Art Summit where studio art faculty to meet with our counterpart in the 7-12 schools.
Promotional video made for Arts and Humanities.
- ❖ Increasing number of cameras and related equipment for student checkout
- ❖ Increase the use of social media to increase enrollment and retention

Program Review: Vocational Nursing NVC Spring 2020



- **Effective Practices**
 - BVNPT surprise visit for three days with no program issues identified (2016)
 - Community support, per Advisory Committee
 - Part time program for students who need to work/ family
 - Survived pandemic meeting BVNPT requirements for concurrent class & clinical so students can graduate on time!
 - Updated catalog, curricu-net and webpage
 - Recruitment of two consistent adjunct faculty to fill long time recently retired adjuncts
- **Summary of Key Findings**
 - Need for increased class size, competing with private schools and push of RN's
 - Need for consistent instructors
 - Need for consistent clinical sites
 - Need for improved pass rates
- **Development of the Three Year Plan**
 - Marketing of the Program
 - <https://vimeo.com/418747345>
 - Improve Enrollment and Retention in Nurs 131
 - CNA requirement as pre-req
 - Success counselor
 - Increased utilization of lab, sim, virtual tools
 - Improve cohort pass rates
 - Grant monies for NCLEX review
 - Improve productivity of the program as cohort size increases
 - Maintain historical relationships with local clinical facilities
 - Continue to offer HEOC 372 to VN students and local facility staff

Thank you “Program Reviewers,” members of the Planning and Budget Committee, and interested members of the NVC community for attending and participating today!

Planning and Budget Committee members:
There will be an opportunity to share reflections on the Program Review Forum at the committee meeting next month.



Thank you!